

Welcome



Mission Heights
JUNIOR COLLEGE
GROWING GREATNESS
KIA MANA AKE

I warmly welcome you to Mission Heights Junior College

As Principal I am looking forward to sharing the next important steps in your child's educational journey.

MHJC has built an enviable reputation for innovative, authentic and personalised learning. Our students enjoy an inclusive, Innovative Learning Environment in which they genuinely collaborate with each other and their teachers.

Our well qualified and passionate teachers are committed to providing a stimulating and challenging curriculum which enables students to enjoy learning and achieve success.

Most importantly, every student is supported to find and grow their own unique greatness, contribute meaningfully to their community and become socially responsible young adults.

All this cannot be achieved without the support of equally committed parents and our wider community. I urge you to work closely with us to create positive working relationships which will enrich, widen and deepen the opportunities we can offer.



Ian Morrison
Principal

BCom, BA, HDipED, PGDSM

103 Jeffs Road, Mission Heights, Auckland 2016 • PO Box 64 448, Botany, Auckland 2163
Phone: +64 (09) 277 7881 • Fax: +64 (09) 277 7883 • Absence Line: +64 (09) 250 5600
Email: admin@mhjc.school.nz • Web: www.mhjc.school.nz



Mission Heights
JUNIOR COLLEGE



Our Vision: 'Growing Greatness'

At Mission Heights Junior College we recognise that every child is a valuable individual and that within each child is a unique "grain of greatness" which it is our mission to grow. We expect great things of our students as they grow to be confident, active, reflective, high achieving independent learners.

To achieve this, we ourselves must aspire to greatness and offer a truly great educational experience which allows opportunities for innovative, constantly evolving personalised learning.

At Mission Heights Junior College we value:

Integrity / Pono we manage ourselves with confidence, honesty and reliability

Compassion / Awhinatanga we relate to others with kindness, love, respect and care

Empowering through learning / Whakamana we are learning to love learning and how to learn and are curious creative and critical thinkers

To achieve this we provide a learning environment which is:

Inclusive

Collaborative and builds community

In addition to meeting the requirements of the New Zealand Curriculum and the National Education Guidelines, our learning programmes challenge students in both the traditional learning areas and in individualised learning programmes, which extend and enrich students according to their individual identified needs.

A feature of our school is our intent to present learning in engaging, relevant and authentic contexts. We are keen to involve the community and real community issues in school life.

Our school has also been designed and constructed to an "environmentally sustainable design" and caring for our environment is a key aspect of our school culture.

OUR VISION

Growing Greatness through innovative, constantly evolving personalised learning...

Growing Greatness



Our Vision: 'Growing Greatness'

Years 7 and 8

In Years 7 and 8 all students study English, Mathematics, Science, Global Studies, Physical Education and Health, Art, Music, Technology, Mandarin, Te Reo Maori and Spanish which are taught by specialist teachers. Year 7 Students are expected to attend camp early in Term one which helps them to transition into the College and their new Whanau.

Years 9 and 10

Our Year 9 and 10 students are our senior students and therefore assume leadership roles as they continue with a challenging academic programme. In addition to the continued study of English, Mathematics, Science, Global Studies, Physical Education and Health, Year 9 and 10 students have the opportunity to select two specialist subjects to study in greater depth should numbers permit and which ideally they will continue with for two years and then onto Senior College.

Options available to Year 9 and 10 students are:

Music, Outdoor Education, History, Art, Drama, Fashion and Design, Digital Technology, Design and Visual Technology, Food Technology, Hospitality, Enterprise studies (Business Studies in Year 10), Media Studies, Mandarin, Te Reo Maori and Spanish.

In Year 10, as appropriate to their abilities, students may have the opportunity to complete NCEA assessments across a range of subject areas, focusing on literacy and numeracy.

Students in all year levels further personalise their learning programme through their DEEP subject selections.

A gifted and talented programme caters for the needs of our students with in the DEEP programme (enrichment) and in the classroom (accelerate).

PERSONALIZED Learning

Each student at Mission Heights Junior College has a Learning Advisor. This teacher, usually from their Whanau, meets with each student individually to assess their progress and set goals based on evidence of their learning.

Our timetable includes a an extension and enrichment 'DEEP' (Discovery, Essentials, Enrichment and Passions) learning session on 4 school days per week:

Students, with their advisor, create a personalised DEEP programme according to their needs, interests and passions. Our DEEP session also allows for;

- Enrichment in new curriculum areas or in areas of existing strength
- Preparation for academic competitions
- Support for students who are finding an aspect of the curriculum challenging
- Opportunities to extend and enrich able students
- An induction to MHJC life for students arriving during the course of the year

Where students are identified as having a specific need in numeracy, literacy or ESOL, they will be directed to an Essential DEEP option to address this need.

ERO REVIEW

“ Teachers and students develop rich and authentic learning experiences and opportunities...”

ERO Report: 2016



Our Vision: 'Growing Greatness'

School Donation

It is our aim at Mission Heights Junior College to offer a range of activities to extend and enrich learning beyond the basic curriculum. The most notable of these include our unique DEEP Programme and our intensive ICT environment. The Board of Trustees has opted in to the government's donation scheme. This means parents are not asked to pay the annual voluntary donation, however, some payments are requested for learning areas with a take-home component (including digital platforms), overnight trips and optional DEEP and extra-curricular activities. Whānau experiencing financial hardship are asked to communicate with their child/ren's Whānau Leader to ensure every student enjoys the educational opportunities provided to all.

Curriculum Payment (to be confirmed)

Curriculum payments are required for subjects with a take home component.

There are other charges for Digital Platforms like Maths Buddy, Education Perfect, Reading Plus and some DEEP options.

Great Teachers

We are fortunate to have a highly qualified, skilled, experienced and motivated staff who work with our students to ensure they have the best possible learning experience. They bring with them a wealth of experience. Our teachers have high expectations of our students and will be great role models.

Our students will live, as they grow to adulthood, in a world where rapid and constant change is a part of their lives. As adults we will model, and support them in developing, a willingness to take every opportunity to learn, to embrace positive change, to face challenges with resilience and a problem solving mentality, to develop a "can do", "have done" attitude and to be prepared to grow by moving, with support, beyond our comfort zones.

Great Facilities

Our students will benefit at an early age from the specialist teaching and specialist facilities of a new state of the art secondary school. These include a gymnasium, theatre, dance studio, music suite, science laboratories, technology workshops, visual arts and design studios and a large well resourced library.

The effective use of Information and Communications Technologies to enhance learning, is a feature of our school both for students and staff. Our aim is that these tools are used by students in their daily school lives, as they are, for most of us, in life out of school and to become capable and responsible users of digital technology. Students have access to high quality equipment to enhance their learning. Parents can access information on Mission Heights Online, to help them support their child's learning. This includes real time reporting and two reports a year which reflect a students' progress, achievement and engagement.

ERO REVIEW

"Students are well engaged and supported to develop high self-efficacy as learners..."

ERO Report: 2016



Our Vision: 'Growing Greatness' - Kia Mana Ake

Our Logo

Our logo visually represents our new and constantly evolving learning community at Mission Heights Junior College.

The logo's circular shape reflects community, connectedness and continuity.

The four koru symbolise the different aspects of our school community which make up the whole...

4 Whānau

Students/teachers/parents/community.

Each Whānau reflects an integral aspect of Aotearoa which contributes to the whole; our coast, our forest, our water and our mountains. These combine to define not only our geography, but have also shaped who we are as New Zealanders and our image in the world.

The colours of the coastal sands for **Takutai Whānau** (gold), the forest for **Ngahere Whānau** (green), the waters of our rivers and lakes for **Wai Whānau** (blue) and the snow on our mountains for **Maunga Whānau** (white) are thus reflected in the four koru, one of the best known symbols of New Zealand which appropriately symbolises new beginnings, learning and growth.

Each koru links to and grows from its relationship to the others.

Students are at the heart of the matter at Mission Heights Junior College and we have chosen to place them at the heart of our logo. The choice of black, a symbol of "kiwi pride" underpins our aspiration to grow great New Zealanders.

We want our students to aspire to greatness across four cornerstones of a balanced education; academic, cultural, sporting and leadership through service. The smaller koru growing out of this central shape are indicative of our concept of growing the greatness in each individual.

The four cornered effect of the heart of the logo also recognises the diversity of our students who have come together as New Zealanders from the four corners of the world.



Mission Heights
JUNIOR COLLEGE
GROWING GREATNESS
KIA MANA AKE



Our Vision: 'Growing Greatness'

Great Support within a Whanau

Setting

At Mission Heights Junior College we value the great spirit, support, positive competition and challenge that comes from being part of a Whanau Community. Students belong, throughout their schooling, to one of our four Whanau communities.

Students will benefit from the security of being in a class group with their peers within a wider Whanau Community of students from all Year levels. At the same time they will enjoy the stimulation of moving to specialist lessons.

A Deputy Principal leads each Whanau Community, having overall responsibility for the welfare of students and staff within the Whanau. The Deputy Principal works alongside an Assistant Principal in each Whanau, whose specific focus is on leading teaching and learning.

Great Extra-Curricular Opportunities

It is increasingly clear that to be truly successful in 21st Century society, students cannot rely solely on achievement in their academic studies. In higher education and in the workplace great value is placed on a broader definition of success, incorporating participation and achievement in cultural and sporting activities and a demonstrated ability and willingness to lead and serve.

Students at Mission Heights Junior College are expected to grow their greatness, in a supportive but challenging environment, across what we see as the four key cornerstones of a balanced education: academic, sporting, cultural and leadership through service.

THE 4 CORNERSTONES



* Leadership through Service



* Cultural



* Sport



* Academic

ERO REVIEW

“The school-wide use of coaching and mentoring programmes for teachers and students is a strength...”

ERO Report: 2016





Zone, Dates and uniform

Mission Heights Junior College is required by the Ministry of Education to have an enrolment scheme.

All students who live within the home zone, as shown on the map on the following page, shall be entitled to enrol at the school

All residential addresses on included sides of boundary roads and all no exit roads off included sides of boundary roads are included in the zone, unless otherwise stated.

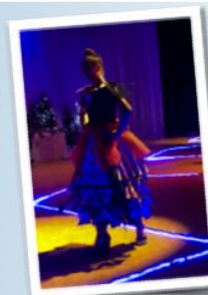
In the North West, starting on Te Irirangi Drive, travel through the walkway to Monash Place, travel east along Monash Place then south into Wayne Francis Drive (97, 88 and above included) then turn east into Hampervale Place. Turn south down Chapel Road (69 - 313, 350 – 408 included) before turning east along Duntrune Road and then into Cyril French Drive (58 - 98 excluded). Travel North along Baverton Close (excluded) and east along Gracechurch Drive (excluded above 16, 17) to the Gracechurch Reserve. Follow the northern boundary across country to the northern end of Jeffs Road to include all roads in the Mission Heights Estate. Travel across country (to include Sandstone Road) to the northern end of Whitford Park Road. Travel south down Whitford Park Road (257, 250 and below included) as far as, but excluding Polo Lane.

Travel south-west across country to the intersection of Redoubt Road (601, 640 and above included) and Michael Boshier Way. (Michael Boshier Way excluded). Continue west across country to the southern end of Murphys Road and onto Adamson Road. Head north on Adamson Road, across Thomas Road (83,64 and above included) and across country to Flat Bush School Road. Head west along Flat Bush School Road before heading north along the centre of Chapel Road. At Ormiston Road head west along the centre of the road to Te Irirangi Drive before turning north along the centre of Te Irirangi Drive back to the starting point.

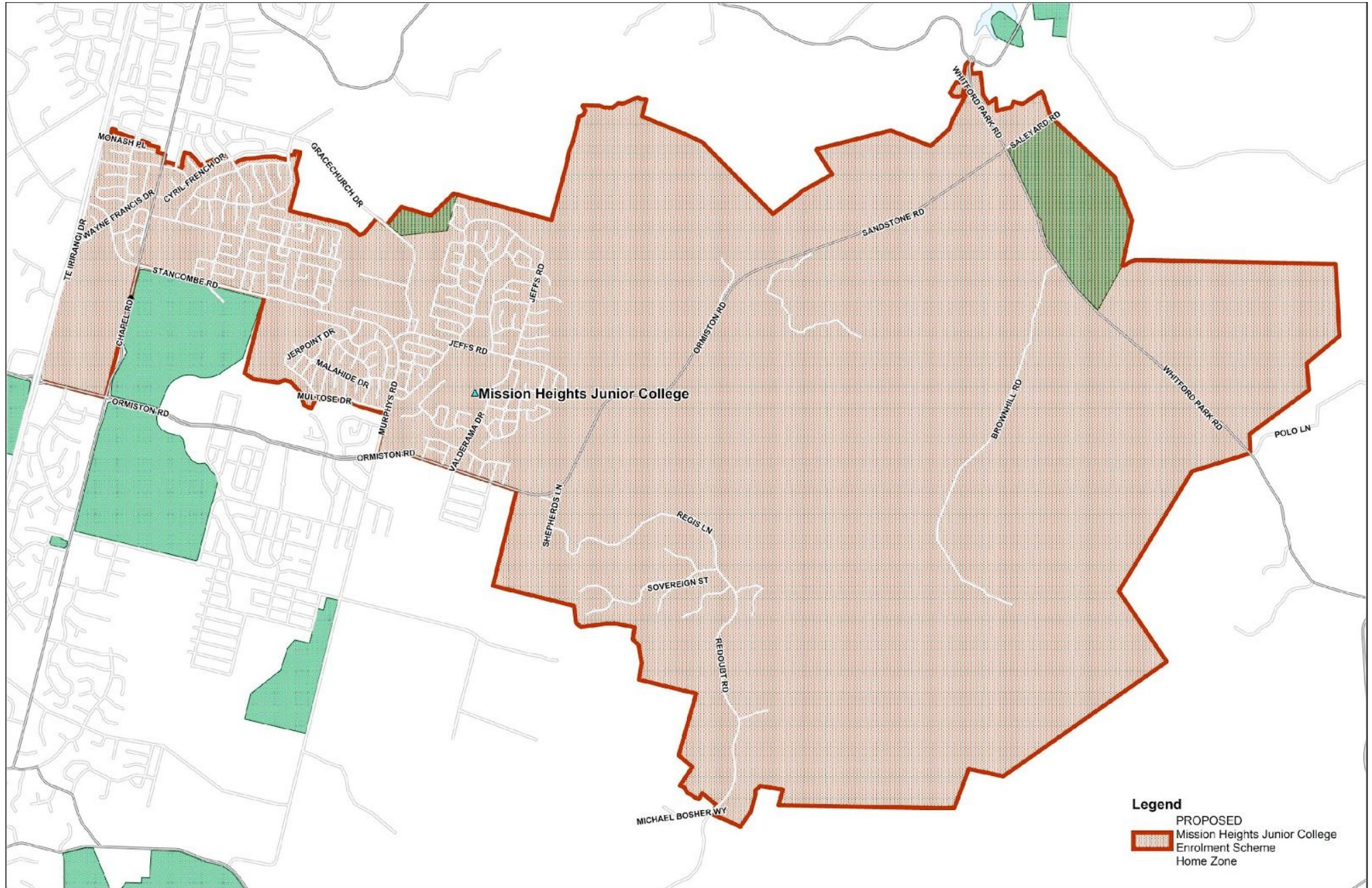
ERO REVIEW

“Students learn through a rich and integrated curriculum that prioritises problem-solving...”

ERO Report: 2016



Zone, Dates and uniform



Zone, Dates and uniform

2021 Enrolments start from the 27th July, 2020

In Zone students for 2021

Enrolments close on **Friday 14th August, 2020**

Applications can be found on our school website: www.mhjc.school.nz

Out of Zone Students for 2021

There are a limited number of spaces available for out of zone students in 2021

Applications must be made by 3:30pm on **Wednesday 2nd September, 2020**

Confirmation by ballot is scheduled for **Wednesday 9th September, 2020**

INFORMATION EVENING on Monday 27th July, 2020 at 6pm in the MHJC Theatre

2021 School Dates

Administration Day: Tuesday 2nd February, 2021

Term 1

Wednesday 3rd February: **Year 7 + Year 10 Students.**

Thursday 4th February: **All students.**

Term ends on Friday 16th April, at 1:00pm.

Term 2

Monday 3rd May to Friday 2nd July, at 1:00pm.

Term 3

Monday 19th July to Friday 24th September

Term 4

Monday 11th October to Friday 10th December

School will be closed on the following public holidays in 2021

Auckland Anniversary Day:	N/A
Waitangi Day:	Sunday 6th February - observed Monday 8th February
Easter:	Friday 2nd April to Monday 5th April
ANZAC Day:	Saturday 25 April - observed Monday 26th April
Queen's Birthday:	Monday 7th June
Labour Day:	Monday 25th October

ERO REVIEW

“Digital technologies extend learning opportunities for all students...”

ERO Report: 2016



Out of Zone Enrolments

The Board of Trustees will determine the number of places, if any, which are likely to be available in the following year for the enrolment of students who live outside the home zone. The Board will publish this information by notice in a daily or community newspaper circulating in the area served by the school. The notice will indicate how applications are to be made and will specify a date by which all applications must be received.

Applications for enrolments will be processed in the following order of priority:

First Priority: This priority category is not applicable at this school because the school does not run a special programme approved by the Secretary.

Second Priority: Must be given to applicants who are siblings of current students.

Third Priority: Must be given to applicants who are siblings of former students.

Fourth Priority: Must be given to any applicant who is a child of a former student of the school.

Fifth Priority: Must be given to any applicant who is either a child of an employee of the board of the school or a child of a member of the board of the school.

Sixth Priority: Must be given to all other applicants.

If there are more applicants in the second, third, fourth or fifth priority groups than there are places available, selection within the priority group will be by a ballot conducted in accordance with instructions by the Secretary under Section 11G(1) of the Education Act 1989. Parents will be informed of the date of any ballot by notice in a daily or community newspaper circulating in the area served by the school.

Applicants seeking second or third priority status will be required to give proof of a sibling relationship.

Zone, Dates and uniform

uniform

Staff and students at Mission Heights Junior College have a school to be proud of. Our uniform represents this pride both at school and in the community as students go to and from school. As part of this philosophy we expect our students to reflect our high standards in the way they wear their school uniform.

The Principal and/or Associate Principal will determine what is appropriate, taking into account student safety and the expectations of the school and its community. The Principal's decision will be final.

All uniform items are to be regulation items for Mission Heights Junior College. Our MHJC sports hoodie may only be worn for PE and Sports Activities.

Uniform can be purchased at **John Russell Schoolwear, 9 Moore Street, Howick, Auckland.** Phone (09) 534 9373

Girls

- Black MHJC skirt which must be knee length or covering the knee or black 'dress trousers'
- MHJC silver grey blouse
- MHJC jersey
- School approved plain white ankle socks
- Black tights
- Black roman sandals
- Plain black, flat, leather school shoes - lace up or single bar
- Black MHJC cap or hat (compulsory in Term 1 and 4 only)
- MHJC jacket
- MHJC scarf (optional)
- MHJC beanie (optional)

Boys

- Black MHJC knee length shorts
- Black MHJC trousers
- MHJC silver grey shirt
- MHJC jersey
- Plain black business ankle socks (no logos)
- Black roman sandals
- Plain black, flat, leather lace up school shoes
- Black MHJC cap or hat (compulsory in Term 1 and 4 only)
- MHJC jacket
- MHJC scarf (optional)
- MHJC beanie (optional)



Jewellery:

- One small (no more than 3mm) plain gold or silver stud, (not hoops) may be worn in each earlobe.
- A watch may be worn.
- No other visible jewellery including facial or body piercing is permitted.

Hats:

During term 1 and 4 in accordance with our school safety guidelines, students must wear an MHJC black cap or a hat when outdoors.

Hair:

- Moderate styles and natural colours. Hair should not cover a student's eyes.

Expectations:

- Clothing should be clean, in good repair and worn correctly.
- School clothing should be clearly named.
- Only approved uniform items are to be visible. Non-regulation uniform or jewellery can be confiscated and will be returned at the end of the term or to parents/caregivers on request.
- Makeup and nail varnish should not be worn.
- Students who arrive at school incorrectly dressed are expected to have a note of explanation from their parent/caregiver.
- As students wearing the Mission Heights Junior College uniform are representing our school, they are expected to respect and abide by school values and expectations.



Mission Heights
JUNIOR COLLEGE



Acceptable Use of ICT at Mission Heights Junior College

(Students and Parents must read, understand and accept these expectations for use of Mission Heights ICT and network prior to enrolment)

Rationale

Telecommunications, the Internet and networked computers provide access to a broad range of information. This access will mean that students can share resources, innovation and communications around the world.

Students are responsible for their behaviour on school computer networks just as they are in a classroom or on school grounds. The networks are provided for students to conduct curriculum based work, research and communication with others. Access to networks will be provided to students who agree to act in a considerate and responsible manner as described. This covers use of any ICT equipment, computer network and Internet access at Mission Heights Junior College.

Guidelines

Use of ICT and the Computer network at school must be appropriate and in accordance with school behavior expectations.

Students using the Internet who log into a network belonging to another organization e.g. NASA, must follow their rules. Students cannot send any material over the network that is prohibited by NZ regulations. This includes copyrighted material, abusive or obscene (rude) material and material which is private in terms of the Privacy Act (1993).

Students may not do business, or any political lobbying on the school networks which may be identified with MHJC.

Students are not to access any sites that their Parents and/or Teachers would disapprove of or find offensive.

The Internet, because it may lead to any publicly available computer in the world, will allow students to access information resources which have not been screened by educators.

Students who do not use the network properly will lose the privilege of using it.

Using telecommunications and networks at Mission Heights Junior College is a privilege not an automatic right. Students will be educated to use ICT responsibly and staff will decide if continued use is not suitable.

The ICT Manager can, in consultation with the Deputy Principal or Associate Principal, cancel or suspend use. Further action under Mission Heights Junior College disciplinary rules may also be taken.

When using the Internet there are rules that have been set up by users. They are to do with courtesy or politeness.

Acceptable Use of ICT at Mission Heights Junior College

At all times students are expected to :-

- Use appropriate language – this means no swearing or rude words, no typing in capitals
- Protect privacy – this means not distributing telephone numbers and addresses of **anyone else**, and not giving their own personal information to others.
- Use the school's contact information for any communications.
- Advise a teacher if a message is received which causes them discomfort or distress.
- Use appropriate discretion and guidance in downloading graphics video or sound files.
These should be relevant to the student's studies.

Security is essential on the school networks.

- Students must not tell anyone what their password is. If they see someone else's password they must not use it or pass it on to other people.
- Sharing passwords will result in automatic loss of computer use for a specified duration.
- Students must, if they spot a security problem or misuse, notify a staff member and must not tell others about it.
- Students must not enter and change any of the systems and communications settings without permission from the ICT Managers.

If a student tries to log in to a network in someone else's name or misuse the system in any way, they may lose their privilege of use and if they have a record of doing this elsewhere, they will not be able to use the Mission Heights Junior College Network.

Vandalism is attempting to harm or destroy other people's data, equipment, and affecting the operation of the Computer network.

This includes introducing computer viruses. If students do this they will have their privileges cancelled and pay for any related damage.

Misuse can come in many forms, but can be viewed as any messages sent/received that indicate or suggest pornography, unethical or illegal solicitation, racism, sexism, bullying, inappropriate language and other issues described above.

Conclusion

Students using the Mission Heights Junior College networks will be required to confirm that they will abide by the guidelines in order to maintain a safe learning environment.

For more information about keeping safe with ICT and the internet visit...

net safe
www.netsafe.org.nz

OUR VISION

Growing Greatness through innovative, constantly evolving personalised learning...

Growing Greatness

